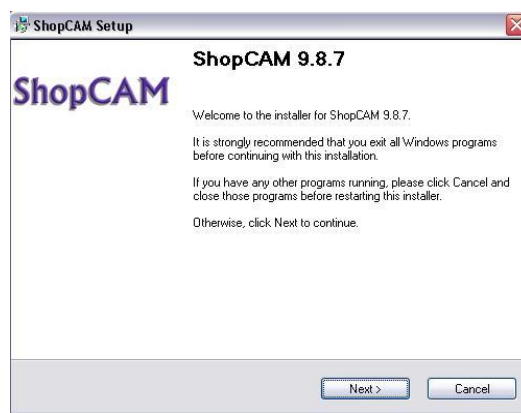


Installing drivers for the USB Key

General Instructions

If you received an update and Shopcam is installed and running, there is no need to do a complete install.



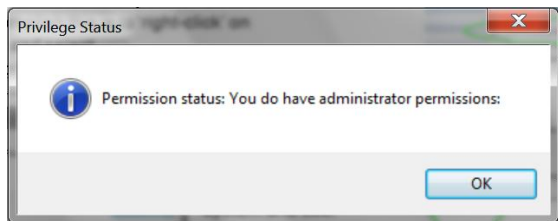
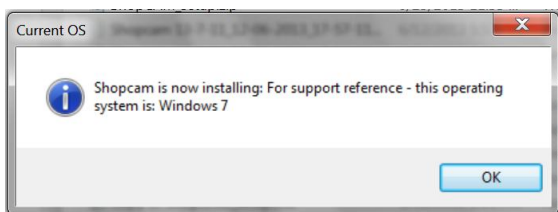
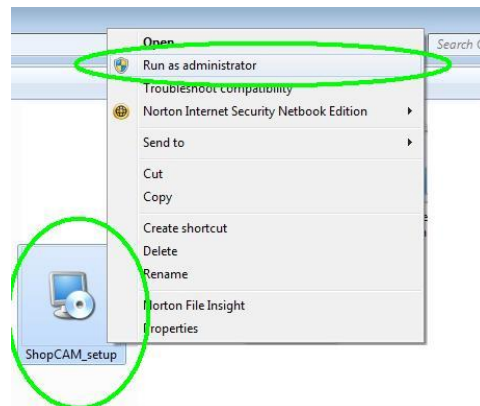
You will need to make sure you are using the new installation program.

This screen on the left is the installation program you will need.

The one on the right is the old install program and will not work with Windows 7 – 8 or 10.

This new install will still work with older XP systems.

When you run the install, make sure you run it as administrator. The easiest ways to accomplish this is to 'right-click' on shopcam_setup.exe and select [Run as Administrator] from the drop down.



After launching the install, a couple dialog boxes will appear to reaffirm which operating system and the user

privileges you have. If you do not have administrator privileges, you will not be able to properly install Shopcam. Contact your IT personnel and make sure they make it available to all users. Towards the end of the install you will see the 'Select Package' screen. For a typical install, just accept the defaults. Make sure to check the [Install USB Driver] checkbox.

Simple Update

If you received a CD and currently have the system installed and running, you do not need to reinstall everything. You should select [Update only]. You can also select the included posts.

Installing drivers for the USB Key

If you received a green USB dongle, you will need to install the key lock drivers.

Install the system like normal then run the install again to install the USB keylock drivers.



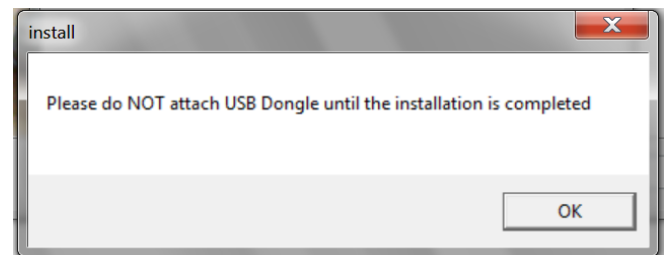
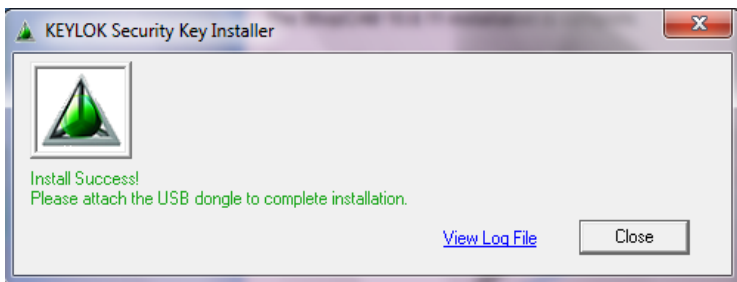
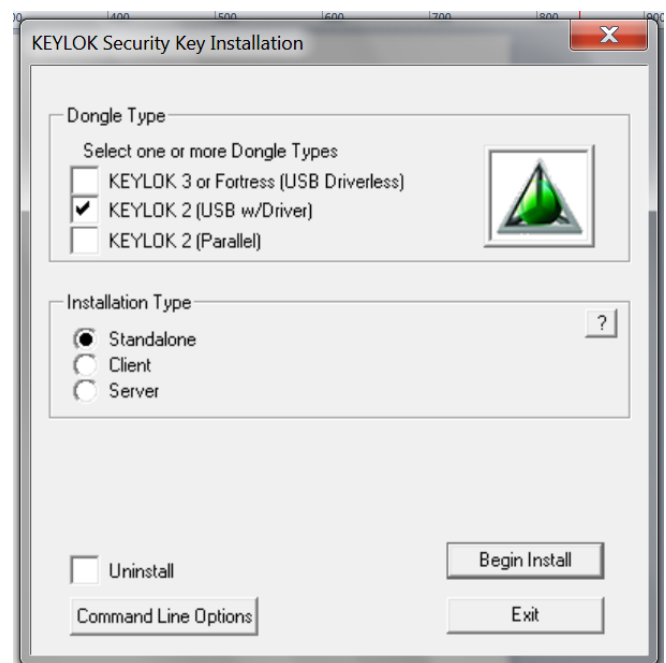
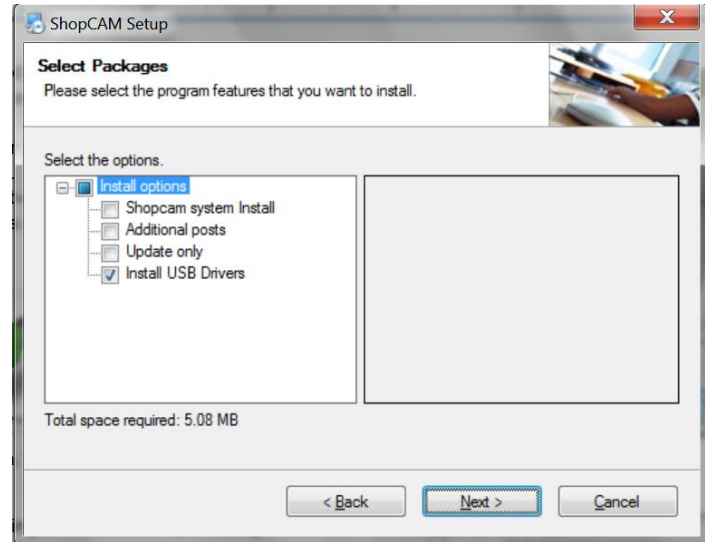
Make sure the key IS NOT PLUGGED IN prior to installing the drivers.

After launching the install, a couple dialog boxes will appear to reaffirm which operating system and user privileges you have. If you do not have administrator privileges, you will not be able to properly install Shopcam. Contact your IT personnel and make sure they make it available to all users.

If the system installed and running, you do not need to reinstall everything. Uncheck [Shopcam system Install].

Make sure the [Install USB Drivers] is checked. When you hit [Next] The Keylock installation will run and look like the window on the right.

Make sure to check KEYLOCK 2 [USB w/Drivers] and [Standalone]. After hitting [Begin Install], simply follow the instructions until the 'Install Successful' window appears. Then attach the USB dongle



Note. If you have any problems with the installation, try a different USB port.